

High Falls Ridge Summit 3211

from the south

with Bud Cox + Joe Herrod

250-73

9/1/18

3rd Barometer (large, heavy one) broke down before ascent

Site	Time	Elevation		Site Description	Notes
		from USGS	estimated		
(A)	9:10-14:20	1890'		Bud's house, 26.5 mi from 2810 via Todd Mtn.	Look at aerial photos for quarry, site (AA), calculate the distance from (Z) to (DD) by walking time. Then estimate elev. betw. (Z) + (DD). 12 min to quarry, 30 min to (47)
(B)	9:22			log deck along (43)	
(C)	9:30	1870'		begin ascent	
(D)	9:57			top steep pitch	
(E)	10:10			blaze DEP bends	
(F)	10:20	2360'		Corner: DEP, SNY, F-Valley	
(G)	10:33		± 2400'	stone pile	
(H)	10:40		± 2440'	2 cinder blocks	
(I)	10:45		± 2500'	begin large BCs (ep #708)	
(J)	11:15			largest BC	
* (VV)	3:20			flat area below ledge	
(M)	11:30		± 2680'	ravine to W drain SW	
(N)	11:40			1st low ledge	
(O)	11:55 to 12:20	2840'		Ledgetop lunch	
(P)	12:40	2925'		Corner = SNY + Frost Valley	
(Q)	1:07		± 3000'	broken ledge	
(R)	1:12			Ledgetop 10'	
(S)	1:30		± 3140'	base of steep pitched ledge; SUBS to 24"	(SS) seep.
(T)	1:40 to 2:25	3211'		Summit 3211'	
(U)	2:50		± 2980'	begin descent off crest of spur	
(V)	3:06	2860'	(ep #709)	cross SNY blaze into Frost Valley atop ledge + steep	
(W)	3:25			blowdown on log road	
(X)	3:35			ravine parallel to log road on N	
(Y)	3:43			log road junc. from W	
(Z)	3:47			enter High Falls Road	
(AA)	3:59			quarry	
(BB)	4:04			Moonshadow Campground	
(CC)	4:07	1980'		apples, farm	
(DD)	4:17	1900'		enter Cave (47)	

Land Acquisition:

25074

Great Lot 6, Connecticut Tract (west side)

north Lot 7, 248 acres, includes Summit 3211' } between 1877 and 1885, both
south Lot 14, 251 acres, SW of Summit 3211 }

Great Lot 6, Denning Tract (east side)

north Lot 135, still Frost Valley, Connell before 1998

Lot 134, between 1920 & 1924

south Lot 133, farmed, between 1924 & 1938. East 1/4 of lot now DEP

The corner (P) is where Lots 7, 14, 134 & 135 meet, at elev 2925'.

General Observations on south end of High Falls Ridge

The ridge is quite dry so that SUB is uncommon, except at (S) at the base of a moist steep pitch. B & BC dominate throughout with low spp. diversity. Only Campyoptera (above (O)), OX & LL are common.

Below (O) intermedia. No seeps (except at (SS)), no bogs. No very old & large SUB or YB. YB widely scattered & locally common only on the steepest pitches at (O) and.

What is unusual is the large number of large, old cherries (similar to Ridge) Pigeon-Biscuit

Absence of shrubs, especially VA, is noteworthy all the way up except on W rim of Summit (T). NO FIR or REDBARK

Black cherries:

(I) 18" to 24", 25" grove. One fallen, broken 25' up, 17" diam. at break, about 100y.

(I) to (J) 32", 30", 29", 33", 37",

(J) largest BC with 132" circumference = 42" dbh.

BC age projections:

Median age for 17" diam (from graph) = 110 y
" " 24" = 155 y
" " 36" = 240 y

Do age projections using ALL-Catkills age-dbh graph

Red maple is common on the old farm between (F) & (I), but is not replaced above by abundant SUB; only scattered SUB. One RM at (I) 24"

SUBS at base of highest ledge-steep pitch (N) 23", gently sloping and NOT a wet flat. More larger SUBS at (S), also a ledge base & 24".

BEECH: Became more common at (H) above the farm,

especially at understory under the BCs. One healthy B 14" betw (I) + (J)

Beech ground cover, in general, varies greatly according to incident light on the forest floor. From obs- at Mill Brook Road trail head

RM ^{Common} In the farm, (F) to (H) seem under 80y, but from (I) above (not farmed) many are older & more scattered.

and along Balsam Lake Mtn Trail on 8/12 + 25/18,

→ dense B sprouts provide nil ground cover

→ moderate B sprouts will provide \$INT, \$CAMP, LL, OX

→ Light B sprouts, mixed with PB and/or BC, will provide typical vidge grarch ground cover.

There does not seem to be an array of ground cover spp that follow Beech as there is for sugar maple (LAP, EUP, TIA, HYDR, ARIS, IMP, SLAT, S CAESIA, VC, V PUB, PA, Athyrium thelyp, ADIANTUM, etc.)

BEECH AND GROUND COVER

Logging history:

(C) to (F): Connells logged ca. 40 to 50y ago, sold to Frost Valley in 1998. Then Frost Valley logged 5 to 10y ago. Stumps of 2 ages. No skid roads.

(F) to (I) NO stumps on old farm.

(I) to (T) 10. NO stumps NO roads. (T) to (V)

(V) to (CC) Frost Valley stumps 5 to 10y old. Recent. Mostly SUB. Skid roads common.

Early SNY clear. + late settlement created 1° down to (I) at ±2500'.

Karl Schmitt's 1917 map shows High Falls Brook Valley logged for hardwoods + softwoods 1910 to 1913 in Great Lot 6 and, for hardwoods in 1915 in Great Lot 9 to the north.

3211 Chest with Worm damage along vidge line.
Schmitt's map shows the 2 farm clearings as small squares.

Stone house at
Branch School
is #1718. Ostreich
Farm #1717.

Ground Cover and Miscellaneous Notes

250-76

not recorded elsewhere on pp 250-73
to 77

- (EE) RM + younger BC begin at top of steep pitch about 100' before farm road. Pasture begins here & ends at (H). L. complanatum is here & nowhere else, plus most dense DP. Some Lyco abt above farm, but more in farm.
- (H) End pasture. Lyco comp ends. DP becomes more scattered. RMs uncommon above this point & BCs become bigger & older (> 80 y ±). BCs + RMs above here can be > 80 y. Scatt. SUB + YB above.
- (J) OX + LL common. B to 24".
- (N) Gently-sloping area below 1st steep ledge has SUB dom, but not seepy. SUBs to 23".
- (O) Ledge top lunch. Canopy > 60 ft. EM-SUB - B-BC-1YB + RA - SCAMPRL begins.
- (P) Mooney → Frost Valley + JNY corner. SCAMPRL dense. BC-B. Canopy 50' to 60'.
- (Q) Long flat. 2900'. BC-B - few SUB - OX-LL - SCAMPRL. Heavy B sprouting. BCs smaller. Open small area of Sedge at base of steeper pitch. Broken ledge. Few YB. 50' canopy. BC dom 12" to 18"
- (R) 1st ledge, then V-shaped ledge.

- (S) SUBs dom at base of final steep pitch to 24". Not wethere, but---
- (SS) Small open seep midway up the pitch with Carex (ornata?) - no fruits, Glycena nervata, TE, CMra, Chrysosplenium, AA, IMP, Smilacina, Hydro, IMP, Adeno, stunted LAP, Pcili. About 40' below summit. Canopy > 75'? Vida mack?
- (T) SUMMIT 3211 (see also p. 250-21 to 25). BC fallen with 20" deep root 'cake, 22" YB. On West ledge top 25' high: SORBUS, MM, MO, ILEX MONT. EM-YB-B-BC dom to 50'. SCAMPRL + OX.
- (U) Mixed SCAMPRL + INT. Begin descent off crest.
- (V) Leave SNY + cross line into Frost Valley. Enter log road + stumps 5 to 10 y old, mainly SUB. Log road descends through a small gap in the ledge. One 30" YB.
- (Z) 1st ASH seen whole hike.
- (AA) Quarry has classic textbook exposure of gray SS over red shale. 1st European weeds since (47), dom by Artemisia in open area.
- (BB) Monarda fistulosa on road below (AA).
- (CC) Enter farm. Apple, Norway spruce. Bud says CCC planted on Connell lands.
- (A) CARP behind Bud's house 0.6 mile from (A) to (C) on Joe's odometer.

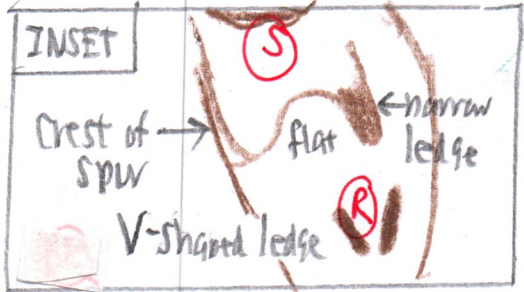
MAP

250-77

See pp 250-21 ff for north approach

SUMMIT 3211'

3211' flat terrace E of t 15' below summit



West rim ledge

Open seep (S) ±3170'

steep pitch with ledges

SUB grove 3140' ±

±3000' broken ledge

ledge (R)

flat below ledge steep pitch

ravine

High Falls Road ends just above SNK blaze

High Falls Brook see pp 250-21 ff

Small Open sedge glade on long flat 2980'

ledge (R)

blowdown

Log road

Log road junction - Open landing visible

2840' high ledge

ledge (R)

corner (P)

ep #709

SUB gentle slope at ledge base

Quarry (AA)

Open area

West Branch New

±2680' ravine

There is no site (K or L)

Moonshadow Campground (BB)

Apple + farm edge (CC)

archery area

Norway Spruce CCC

P.O. garage

47

ep #708 ±2500'

for continuation see pp.

farm road

tillot

have

1900'

Joe on the north course ↑

Open defoliated area

Iron rod marks slight bend in Brooks + Brooks blaze line

power line

Open flood plain comes up to road at the blaze

±2440 2 cinder blocks ±2400 (H)

(G)

(F)

Stone pile

(E)

(D)

(B)

47

Upper edge of pasture

(S)

lower edge of pasture

open log deck

FROST VALLEY

DEP

47

Scots pine

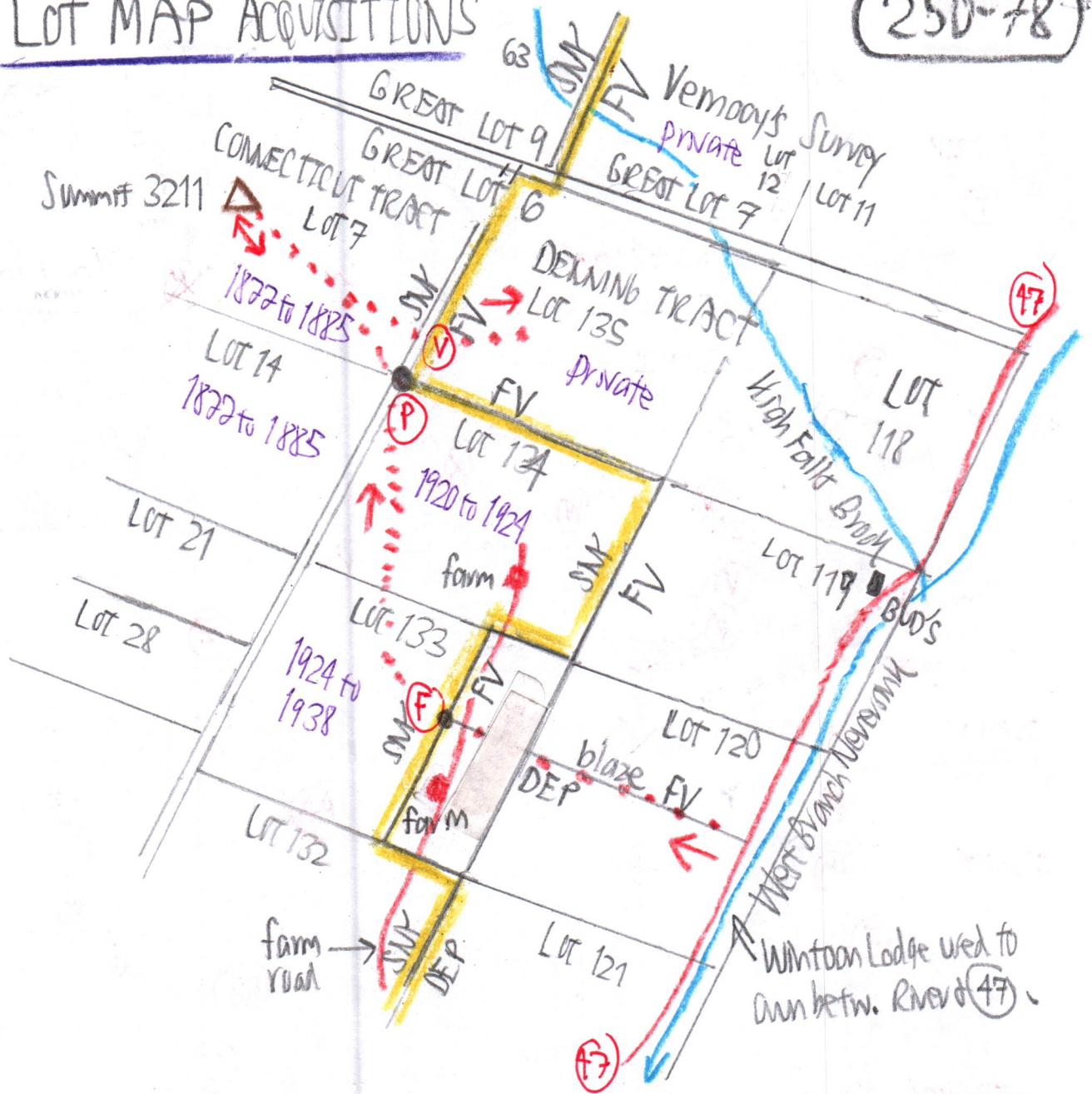
40 MPH sign

Small Norway spruce Plantation

See pp. 250-58 ff + 67 ff for continuation

LOT MAP ACQUISITIONS

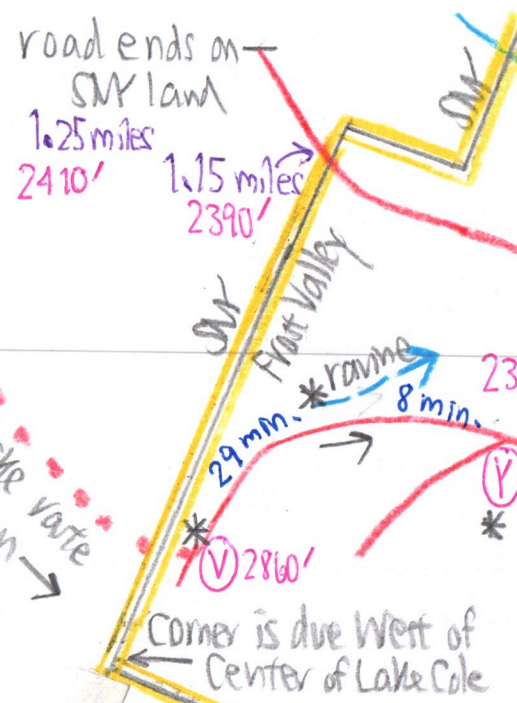
250-78



Bud says Connell^{had} owned the SW side of High Falls Brook from (47) up to the falls. Above Falls, Connell-Frost Valley line diverged^{NW} from the brook so that the brook was entirely Connell's. The trails on NE side of High Falls Brook follow this old line. Now all Frost Valley since 1998. See Frost Valley maps in MK files for any details: pp.

Log Roads West of High Falls Brook (25079)

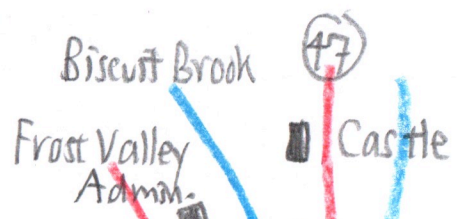
△ (T) 3211



* Walking time betw. *

bright log deck appears as a tiny dot on the Bing aerial photos. Due west of Admn. Bldg. parking lot

Log deck is visible from (Z) and maybe 150ft away



Evidence of location:
① Aerial photos, obs. 9/15/18
② Hiking times for distances, 9/11/18

Log road is shown on 1966 USGS Clayville Quad. 1917 Karl Schmitt map shows no road, but does show logged area of 1910-1913 (by Connells?)

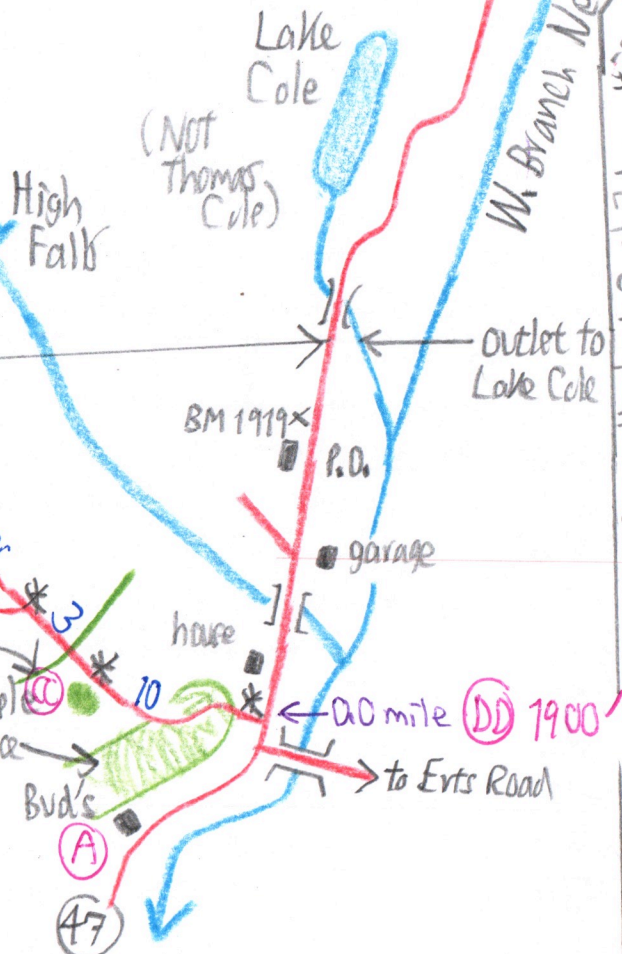
Quarry is at a latitude just south of where Lake Cole outlet crosses under (47) (from Bing aerial photos)

Mileage on High Falls Log Road is from 0.00 at Route (47).

Road NOT shown on 1908-1910 Neversink Quad.

Maybe of bark road origin: "Jim Reed's Shanty" of Burroughs (1869)?

Moonshadow Campground (BB) Farm limit 1980' 0.2 mile CCC Norway spruce



According to Bud: Connell had 3 children. His daughter married a Mooney. So Mooney = Connell.